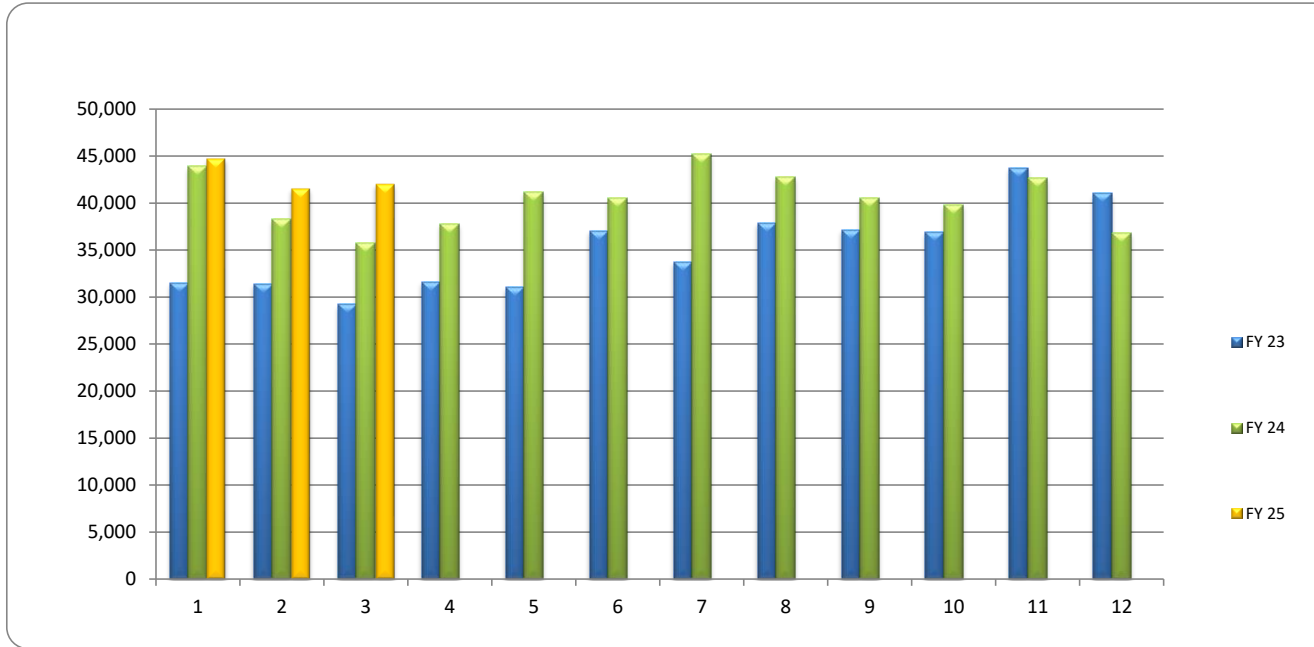


# Fiscal Year Passenger Trips Comparison FY/25



	Oct	Nov	Dec	Jan	Feb	Mar	Apr	May	June	July	Aug	Sept	Totals
<b>FY 23</b>	31,484	31,387	29,210	31,628	31,020	37,006	33,739	37,850	37,141	36,964	43,719	41,006	<b>422,154</b>
<b>FY 24</b>	43,897	38,282	35,713	37,767	41,173	40,506	45,249	42,770	40,576	39,816	42,657	36,845	<b>485,251</b>
<b>FY 25</b>	44,700	41,528	42,002	0	0	0	0	0	0	0	0	0	<b>128,230</b>



### 2025

# of Days  
operated  
Weekday  
Saturday

Oct	Nov	Dec	Jan	Feb	Mar	Apr	May	June	July	Aug	Sept
2024	2024	2024	2025	2025	2025	2025	2025	2025	2025	2025	2025
23	20	21	20	20	21	22	21	20	22	21	21
4	5	4	4	4	5	4	5	4	4	5	4
	CLOSED Thanksgiving	CLOSED Christmas	CLOSED New Years & MLKing Bday				CLOSED Mem Day	Closed Juneteenth	CLOSED Indep. Day		CLOSED Labor Day

### 2024

# of Days  
operated  
Weekday  
Saturday

Oct	Nov	Dec	Jan	Feb	Mar	Apr	May	June	July	Aug	Sept
2023	2023	2023	2024	2024	2024	2024	2024	2024	2024	2024	2024
22	21	20	21	21	21	22	22	19	22	22	20
4	4	5	4	4	5	4	4	5	4	5	4
	CLOSED Thanksgiving	CLOSED Christmas	CLOSED New Years & MLKing Bday				CLOSED Mem Day	Closed Juneteenth	CLOSED Indep. Day		CLOSED Labor Day

### Vehicle Revenue Miles

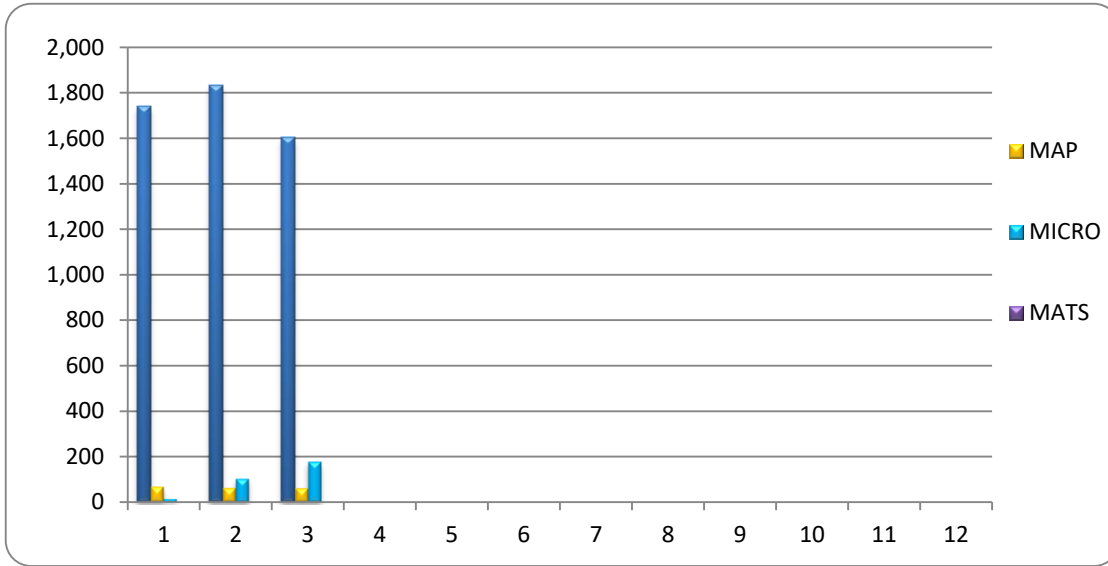
	Oct	Nov	Dec	Jan	Feb	Mar	Apr	May	June	July	Aug	Sept	Totals
<b>Weekday</b>	96,074	91,707	87,340	91,707	91,707	91,707	96,074	96,074	82,973	96,074	96,074	87,340	<b>1,104,851</b>
<b>Saturday</b>	9,490	9,490	11,862	9,490	9,490	11,862	9,490	9,490	11,862	9,490	11,862	9,490	<b>123,368</b>
<b>Total Rev Miles</b>	105,564	101,197	99,202	101,197	101,197	103,569	105,564	105,564	94,835	105,564	107,936	96,830	<b>1,228,219</b>

### Vehicle Revenue Hours

	Oct	Nov	Dec	Jan	Feb	Mar	Apr	May	June	July	Aug	Sept	Totals
<b>Weekday</b>	5,935	5,665	5,395	5,665	5,665	5,665	5,935	5,935	5,125	5,935	5,935	5,395	<b>68,247</b>
<b>Saturday</b>	516	516	645	516	516	645	516	516	645	516	645	516	<b>6,708</b>
<b>Total Rev Hous</b>	6,451	6,181	6,040	6,181	6,181	6,310	6,451	6,451	5,770	6,451	6,580	5,911	<b>74,955</b>

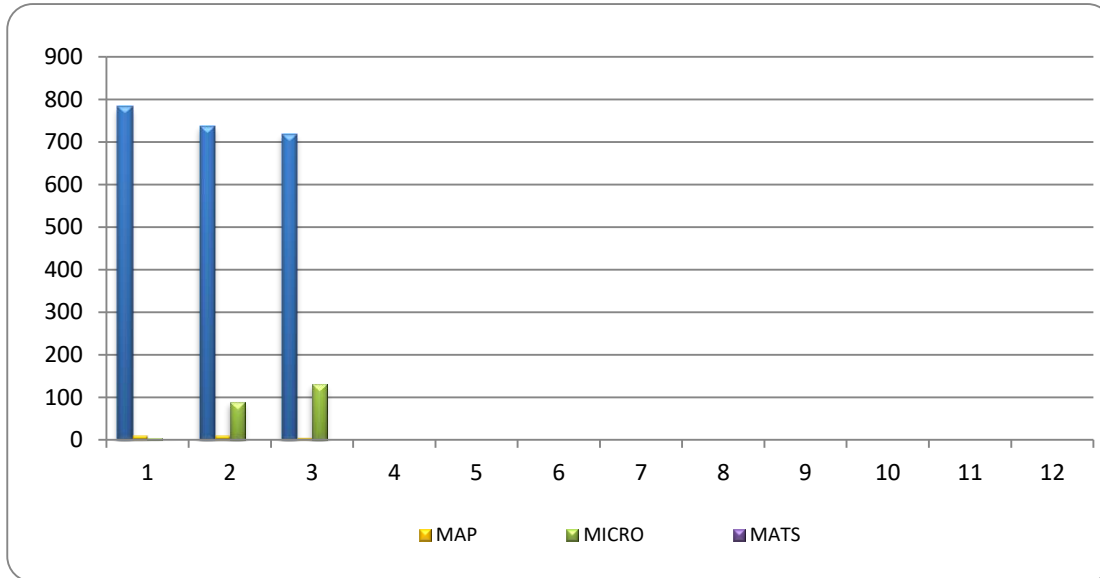
## Average Weekday Passenger

	<i>Oct</i>	<i>Nov</i>	<i>Dec</i>	<i>Jan</i>	<i>Feb</i>	<i>Mar</i>	<i>Apr</i>	<i>May</i>	<i>Jun</i>	<i>Jul</i>	<i>Aug</i>	<i>Sep</i>
<b>MATS</b>	1,742	1,832	1,604									
<b>MAP</b>	64	58	57									
<b>MICRO</b>	14	103	177									



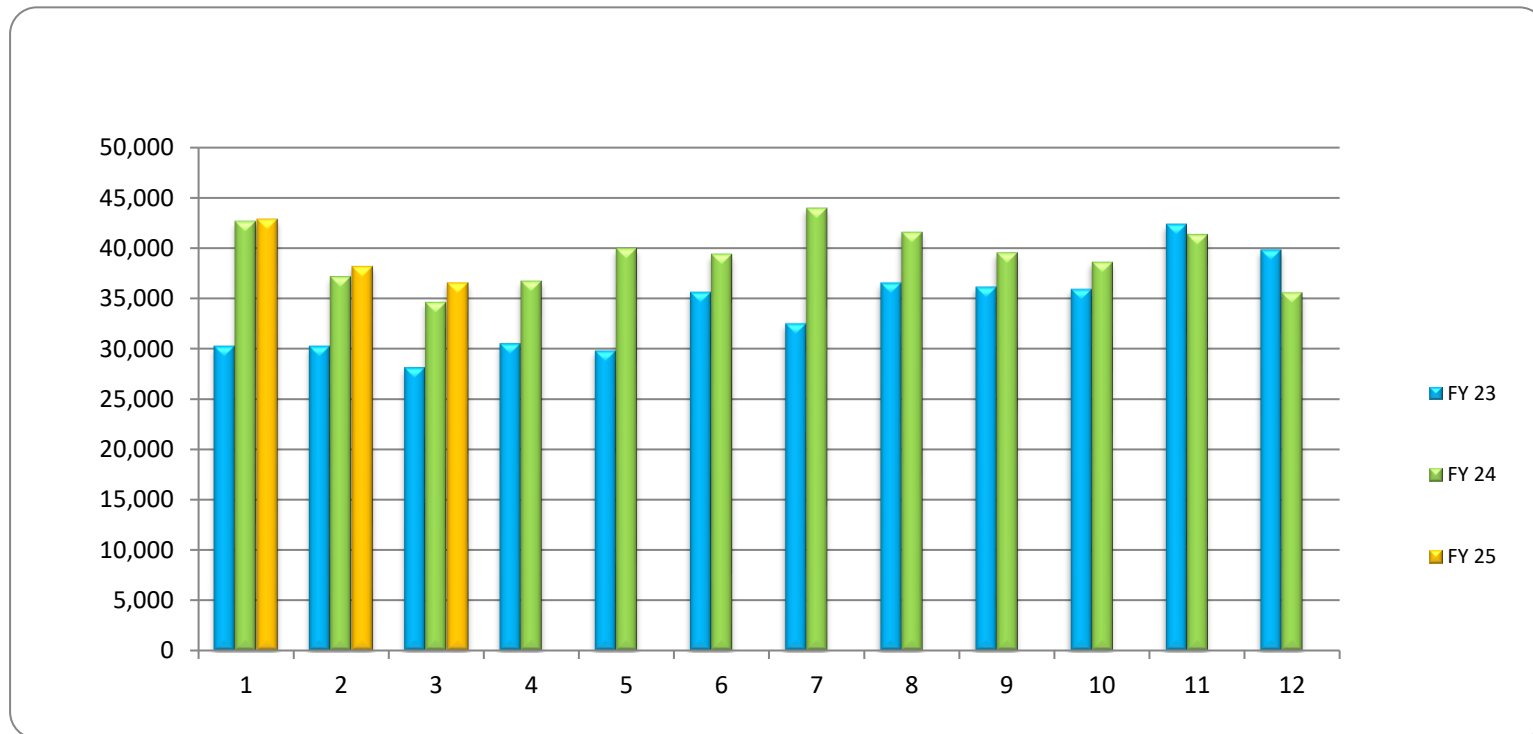
## Average Saturday Passenger

	<i>Oct</i>	<i>Nov</i>	<i>Dec</i>	<i>Jan</i>	<i>Feb</i>	<i>Mar</i>	<i>Apr</i>	<i>May</i>	<i>Jun</i>	<i>Jul</i>	<i>Aug</i>	<i>Sep</i>
<b>MATS</b>	783	737	719									
<b>MAP</b>	8	8	4									
<b>MICRO</b>	4	89	130									



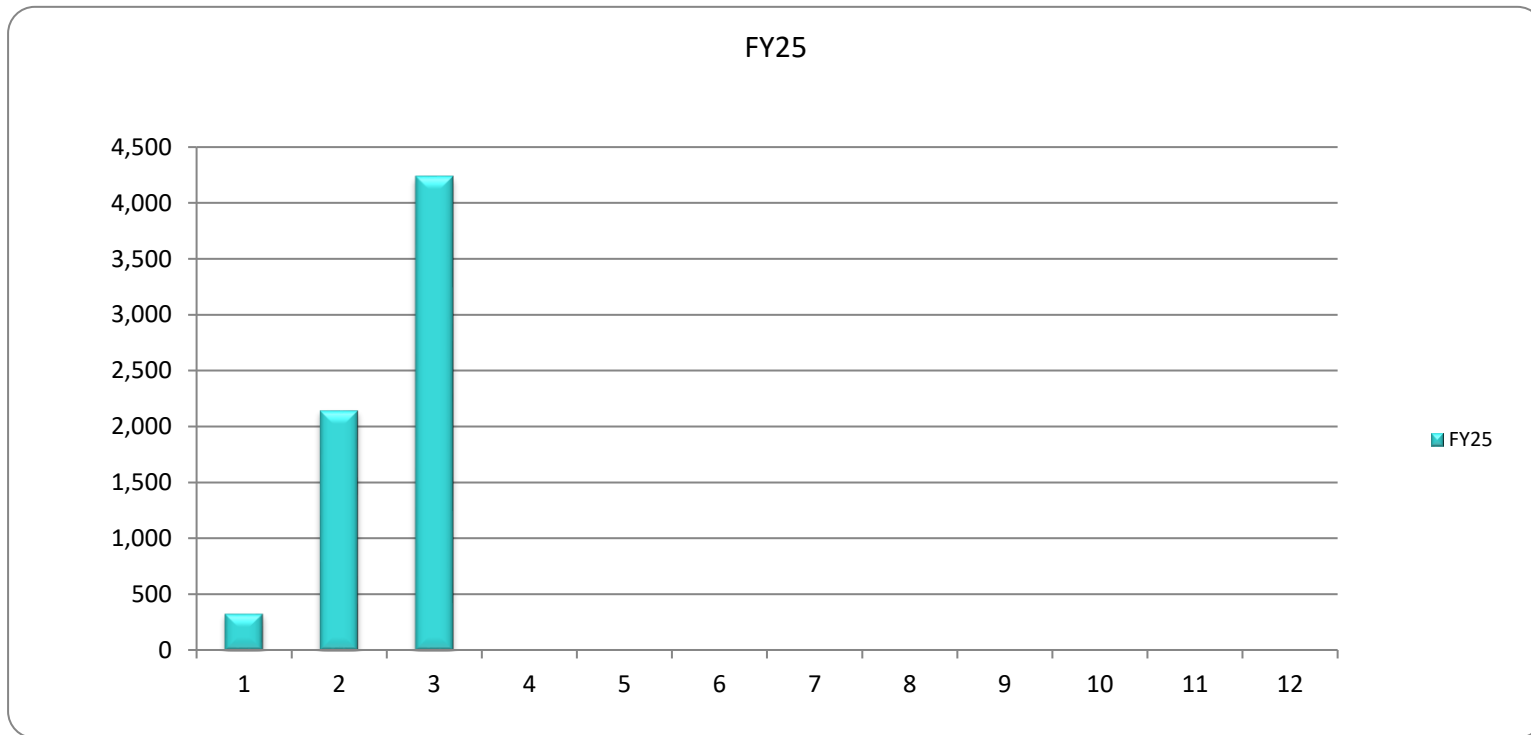
# MATS Passenger Trips

	<i>Oct</i>	<i>Nov</i>	<i>Dec</i>	<i>Jan</i>	<i>Feb</i>	<i>Mar</i>	<i>Apr</i>	<i>May</i>	<i>June</i>	<i>July</i>	<i>Aug</i>	<i>Sept</i>	<b>Totals</b>
<b>FY 23</b>	30,232	30,246	28,104	30,495	29,766	35,587	32,475	36,513	36,088	35,883	42,331	39,775	<b>407,495</b>
<b>FY 24</b>	42,630	37,188	34,640	36,725	39,988	39,391	43,964	41,549	39,522	38,594	41,356	35,593	<b>588,745</b>
<b>FY 25</b>	42,864	38,183	36,558										<b>117,605</b>



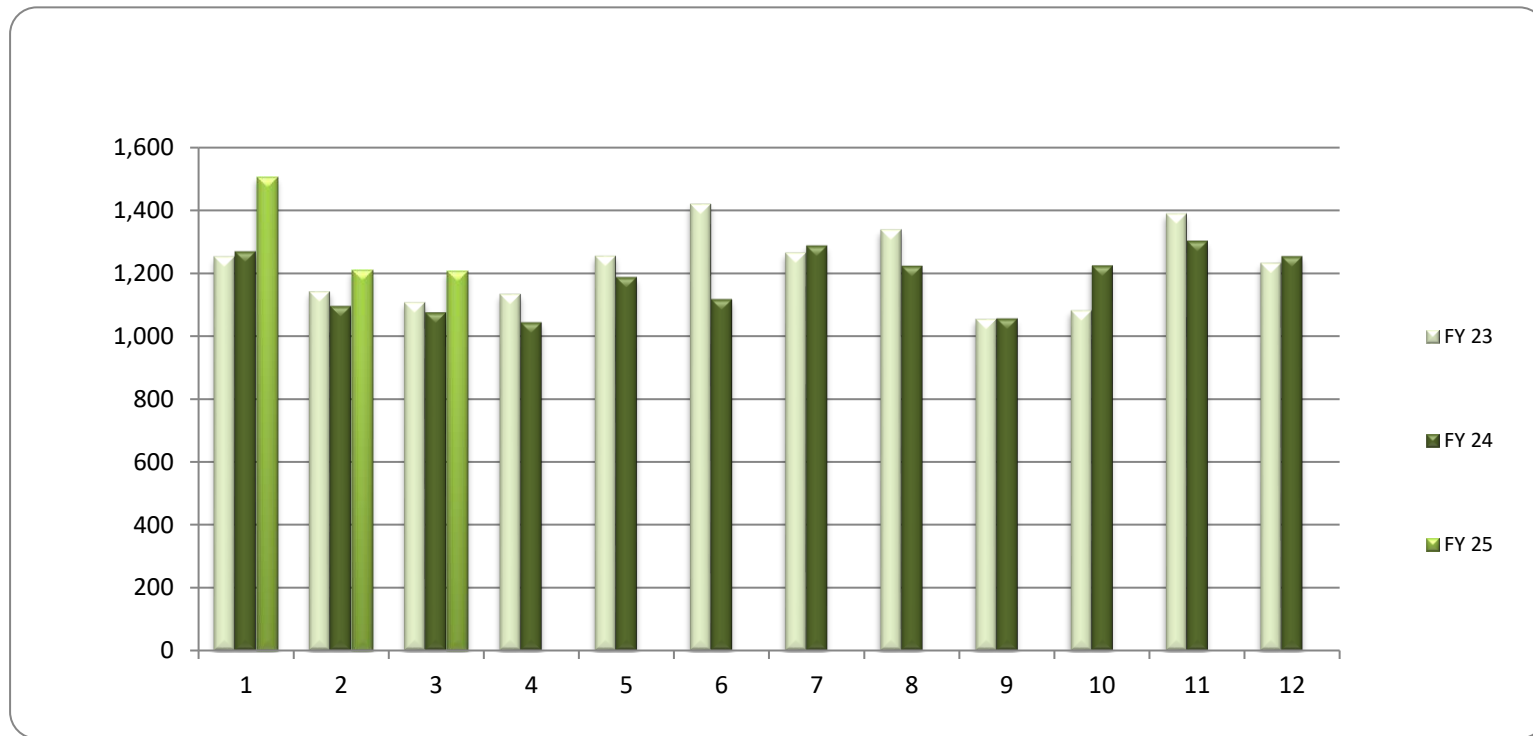
# MicroTransit Passenger Trips

	<i>Oct</i>	<i>Nov</i>	<i>Dec</i>	<i>Jan</i>	<i>Feb</i>	<i>Mar</i>	<i>Apr</i>	<i>May</i>	<i>June</i>	<i>July</i>	<i>Aug</i>	<i>Sept</i>	<b>Totals</b>
<b>FY25</b>	331	2,151	4,238										<b>6,720</b>



# MAP Passenger Trips

	<i>Oct</i>	<i>Nov</i>	<i>Dec</i>	<i>Jan</i>	<i>Feb</i>	<i>Mar</i>	<i>Apr</i>	<i>May</i>	<i>June</i>	<i>July</i>	<i>Aug</i>	<i>Sept</i>	<b>Totals</b>
<b>FY 23</b>	1,252	1,141	1,106	1,133	1,254	1,419	1,264	1,337	1,053	1,081	1,388	1,231	<b>14,659</b>
<b>FY 24</b>	1,267	1,094	1,073	1,042	1,185	1,115	1,285	1,221	1,054	1,222	1,301	1,252	<b>14,111</b>
<b>FY 25</b>	1,505	1,210	1,206										<b>3,921</b>



# Passenger Trips By Department FY25

	Oct	Nov	Dec	Jan	Feb	Mar	Apr	May	June	July	Aug	Sept	Totals
<b>FIXED</b>	42,864	38,167	36,558	0	0	0	0	0	0	0	0	0	<b>117,589</b>
<b>MAP</b>	1,505	1,210	1,206	0	0	0	0	0	0	0	0	0	<b>3,921</b>
<b>MICRO</b>	331	2,151	4,238	0	0	0	0	0	0	0	0	0	<b>6,720</b>
<b>TOTAL</b>	<b>44,700</b>	<b>41,528</b>	<b>42,002</b>	<b>0</b>	<b>0</b>	<b>0</b>	<b>0</b>	<b>0</b>	<b>0</b>	<b>0</b>	<b>0</b>	<b>0</b>	<b>128,230</b>

