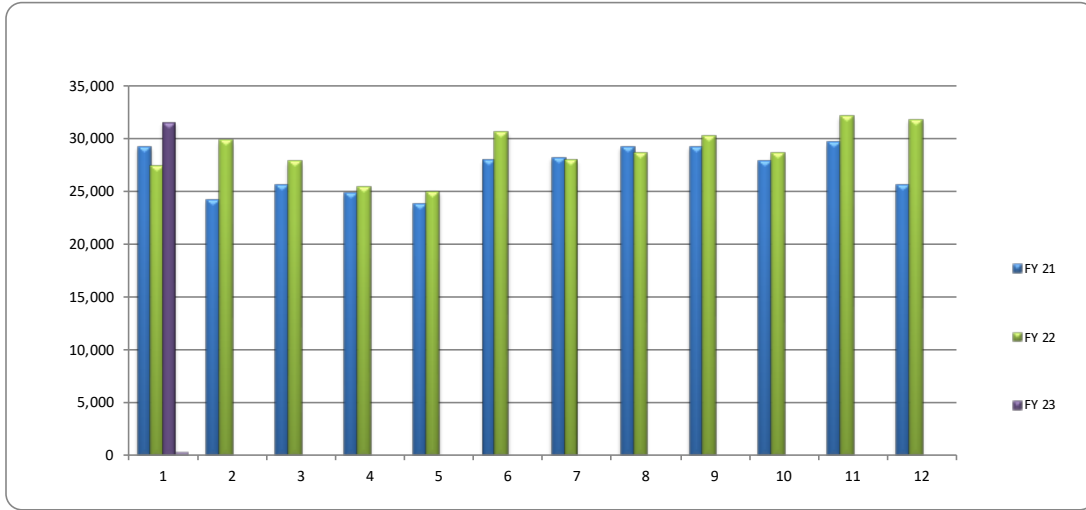


Fiscal Year Passenger Trips Comparison FY/23



	Oct	Nov	Dec	Jan	Feb	Mar	Apr	May	June	July	Aug	Sept	Totals
FY 21	29,210	24,197	25,585	24,838	23,650	27,933	28,167	29,202	29,226	27,861	29,586	25,602	325,057
FY 22	27,339	29,728	27,771	25,390	24,928	30,506	27,924	28,571	30,270	28,564	32,072	31,752	344,815
FY 23	31,484												31,484



2023

# of Days	Oct	Nov	Dec	Jan	Feb	Mar	Apr	May	June	July	Aug	Sept
operated	2022	2022	2022	2023	2023	2023	2023	2023	2023	2023	2023	2023
Weekday	21	21	21	21	20	23	20	22	22	20	23	20
Saturday	5	4	5	4	4	4	5	4	4	5	4	5
		CLOSED Thanksgiving	CLOSED Christmas	CLOSED New Years				CLOSED Mem Day	CLOSED Juneteenth	CLOSED Independ. Day		CLOSED Labor Day

2022

# of Days	Oct	Nov	Dec	Jan	Feb	Mar	Apr	May	June	July	Aug	Sept
operated	2021	2021	2021	2022	2022	2022	2022	2022	2022	2022	2022	2022
Weekday	21	21	23	21	19	23	21	21	22	20	23	21
Saturday	5	4	4	4	4	4	5	4	4	5	4	4
		CLOSED Thanksgiving	CLOSED Christmas	CLOSED New Years				CLOSED Mem Day	CLOSED Juneteenth	CLOSED Independ. Day		CLOSED Labor Day

Vehicle Revenue Miles

	Oct	Nov	Dec	Jan	Feb	Mar	Apr	May	June	July	Aug	Sept	Totals
Weekday	91,707	91,707	91,707	91,707	87,340	100,441	87,340	96,074	96,074	87,340	100,441	87,340	1,109,218
Saturday	11,862	9,490	11,862	9,490	9,490	9,490	11,862	9,490	9,490	11,862	9,490	11,862	125,741
Total Rev Miles	103,569	101,197	103,569	101,197	96,830	109,931	99,202	105,564	105,564	99,202	109,931	99,202	1,234,959

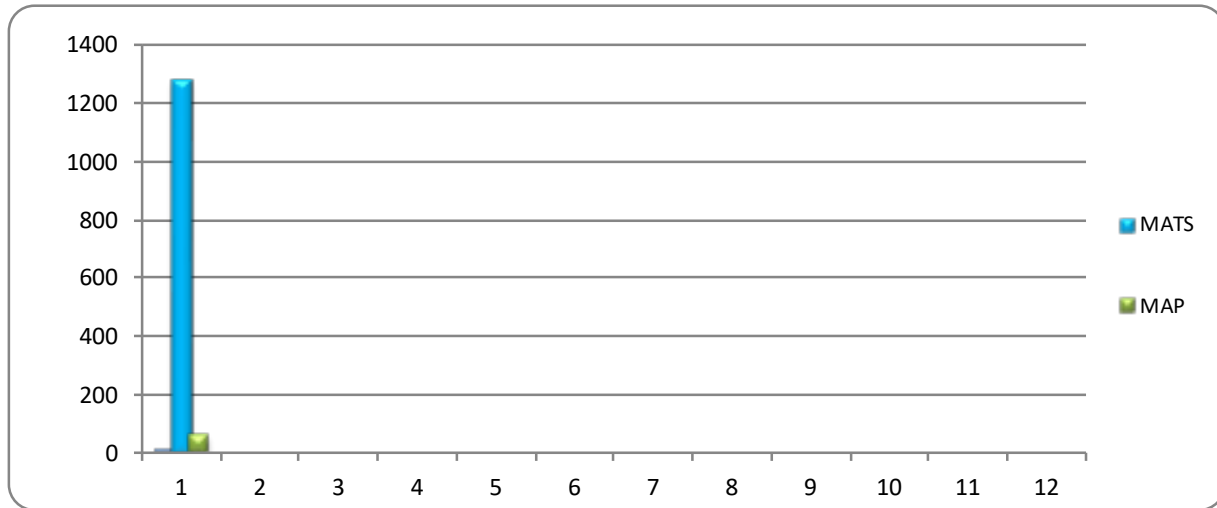
Vehicle Revenue Hours

	Oct	Nov	Dec	Jan	Feb	Mar	Apr	May	June	July	Aug	Sept	Totals
Weekday	5,665	5,665	5,665	5,665	5,395	6,204	5,395	5,935	5,935	5,395	6,204	5,395	68,517
Saturday	645	516	645	516	516	516	645	516	516	645	516	645	6,837
Total Rev Hous	6,310	6,181	6,310	6,181	5,911	6,720	6,040	6,451	6,451	6,040	6,720	6,040	75,354



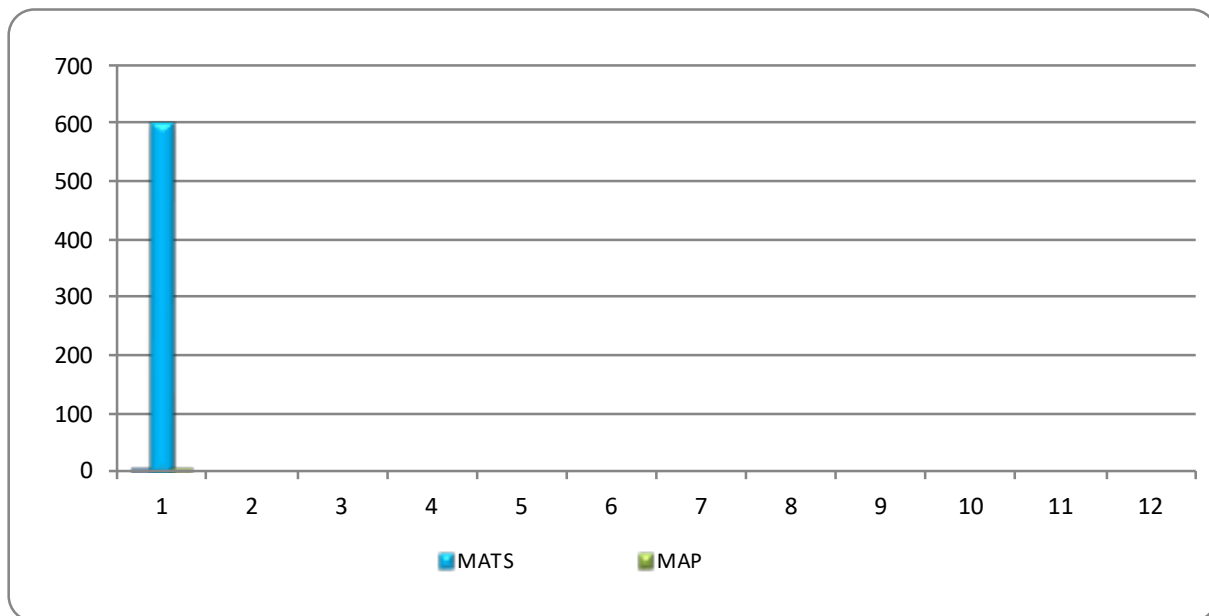
Average Weekday Passenger

	Oct	Nov	Dec	Jan	Feb	Mar	Apr	May	Jun	Jul	Aug	Sep
MATS	1,278											
MAP	59											



Average Saturday Passenger

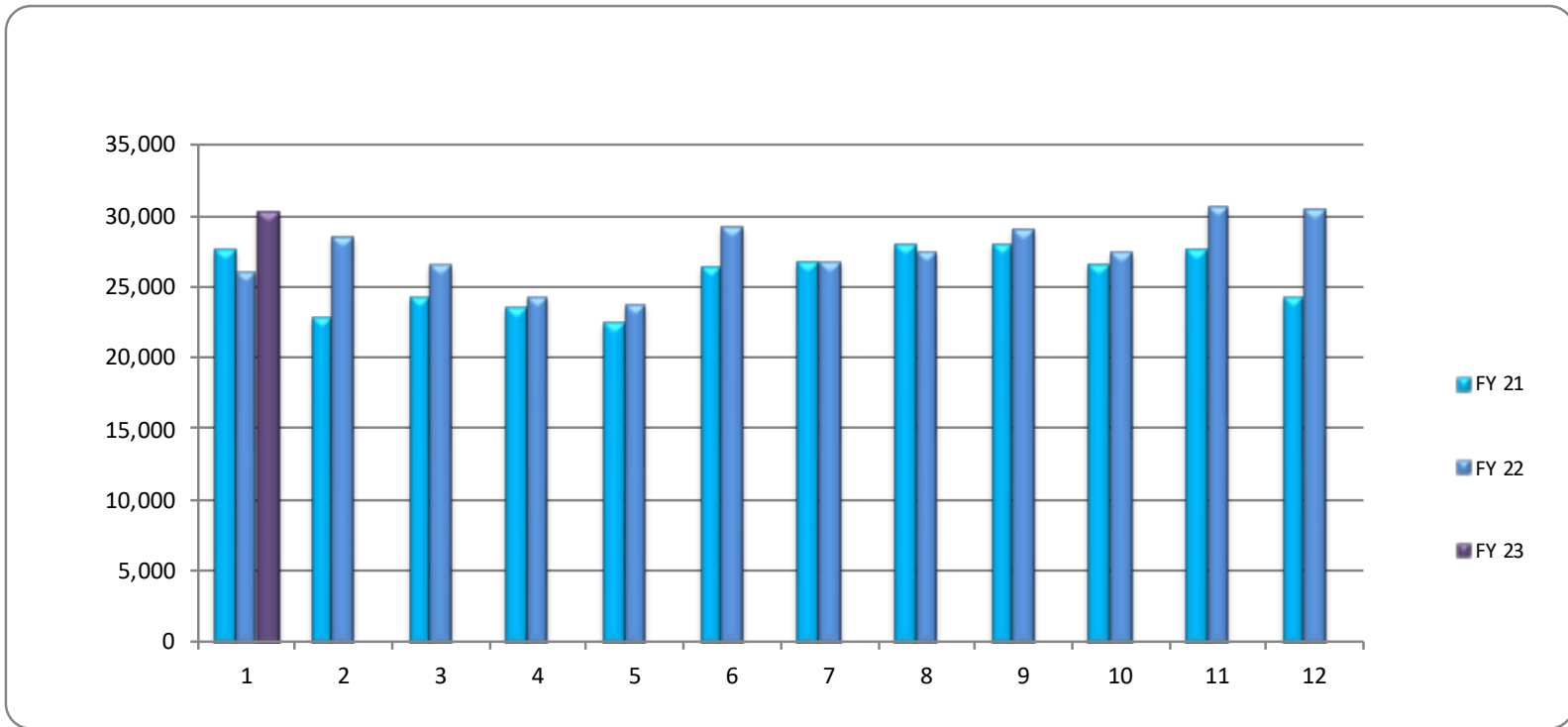
	Oct	Nov	Dec	Jan	Feb	Mar	Apr	May	Jun	Jul	Aug	Sep
MATS	604											
MAP	3											



MATS Passenger Trips



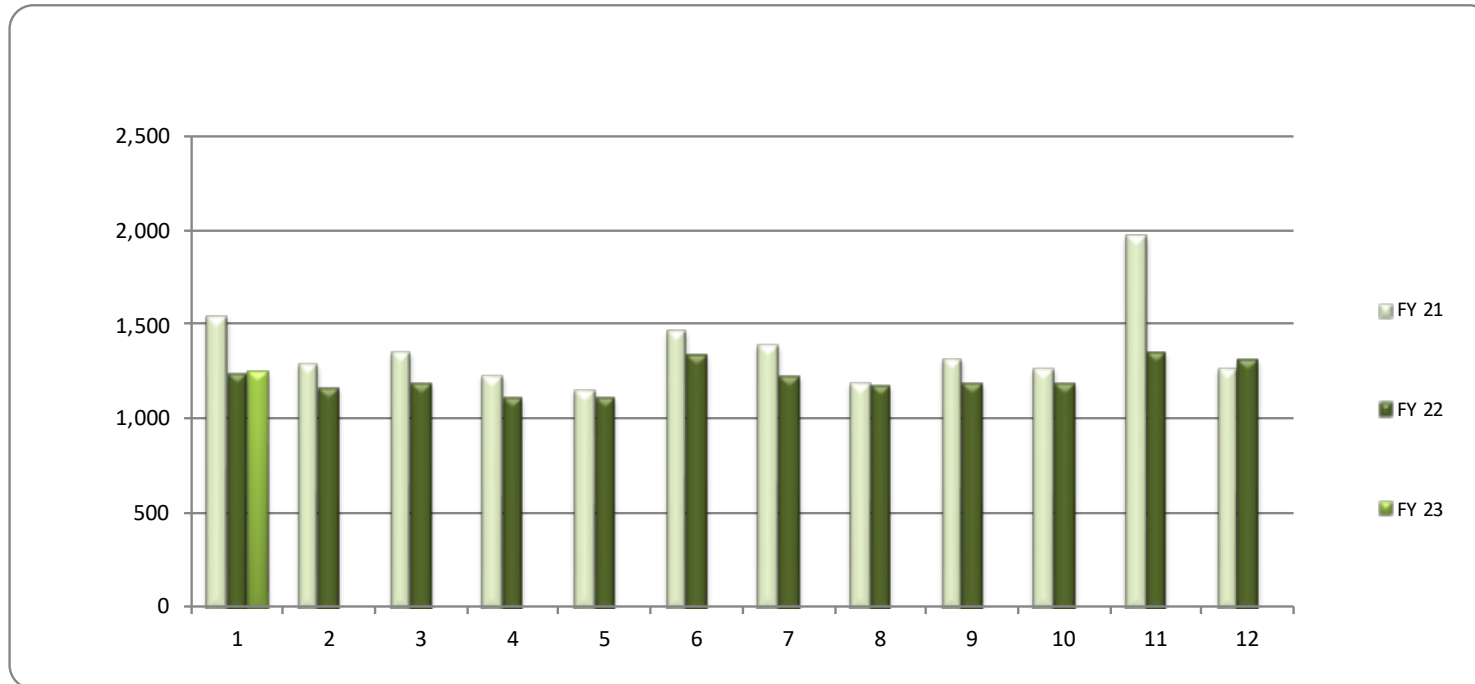
	<i>Oct</i>	<i>Nov</i>	<i>Dec</i>	<i>Jan</i>	<i>Feb</i>	<i>Mar</i>	<i>Apr</i>	<i>May</i>	<i>June</i>	<i>July</i>	<i>Aug</i>	<i>Sept</i>	Totals
FY 21	27,662	22,908	24,225	23,609	22,502	26,465	26,773	28,010	27,905	26,591	27,616	24,334	308,600
FY 22	26,093	28,567	26,586	24,261	23,819	29,162	26,698	27,395	29,077	27,373	30,713	30,437	330,181
FY 23	30,232												30,232



MAP Passenger Trips



	<i>Oct</i>	<i>Nov</i>	<i>Dec</i>	<i>Jan</i>	<i>Feb</i>	<i>Mar</i>	<i>Apr</i>	<i>May</i>	<i>June</i>	<i>July</i>	<i>Aug</i>	<i>Sept</i>	Totals
FY 21	1,548	1,289	1,360	1,229	1,148	1,468	1,394	1,192	1,321	1,270	1,970	1,268	16,457
FY 22	1,246	1,161	1,185	1,109	1,109	1,344	1,229	1,176	1,193	1,191	1,359	1,315	14,617
FY 23	1,252												1,252



Passenger Trips By Department FY23



	Oct	Nov	Dec	Jan	Feb	Mar	Apr	May	June	July	Aug	Sept	Totals
FIXED	30,232	0	0	0	0	0	0	0	0	0	0	0	30,232
MAP	1,252												1,252
TOTAL	31,484												31,484

