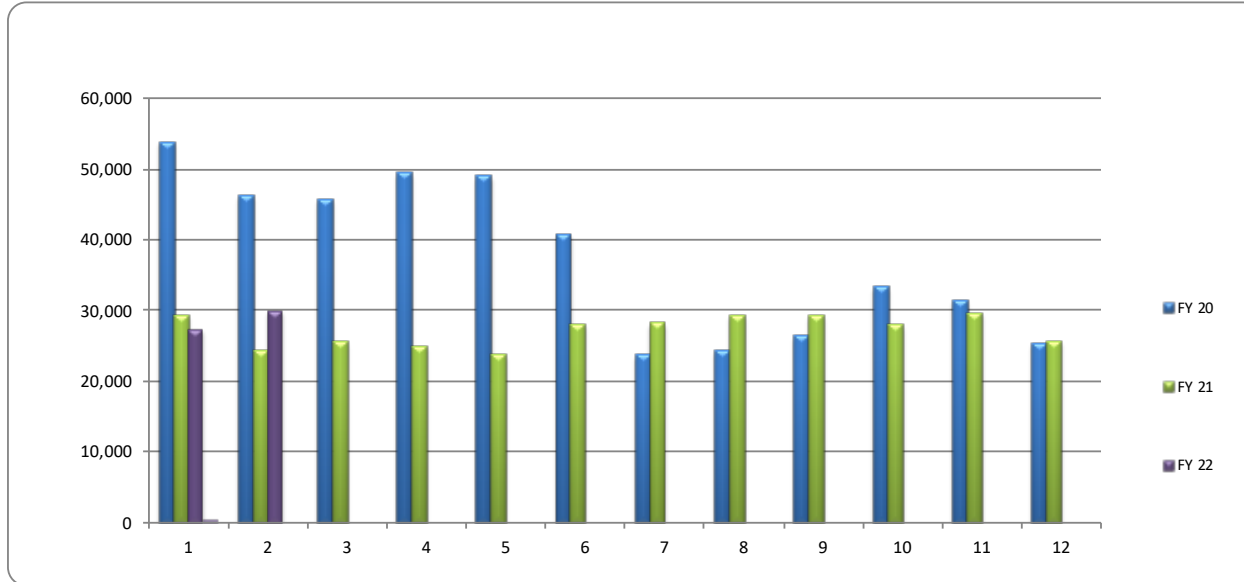


Fiscal Year Passenger Trips Comparison



	Oct	Nov	Dec	Jan	Feb	Mar	Apr	May	June	July	Aug	Sept	Totals
FY 20	53,748	46,204	45,615	49,415	48,843	40,635	23,614	24,265	26,227	33,261	31,308	25,328	448,463
FY 21	29,210	24,197	25,585	24,838	23,650	27,933	28,167	29,202	29,226	27,861	29,586	25,602	325,057
FY 22	27,339	29,728											57,067



2022

# of Days operated	Oct 2021	Nov 2021	Dec 2021	Jan 2022	Feb 2022	Mar 2022	Apr 2022	May 2022	June 2022	July 2022	Aug 2022	Sept 2022
Weekday	21	21	22	20	20	23	21	21	22	20	23	21
Saturday	5	4	4	5	4	4	5	4	4	5	4	4
		CLOSED Thanksgiving	CLOSED Christmas	CLOSED New Years				CLOSED Mem Day		CLOSED Indep. Day		CLOSED Labor Day

2021

# of Days operated	Oct 2020	Nov 2020	Dec 2020	Jan 2021	Feb 2021	Mar 2021	Apr 2021	May 2021	June 2021	July 2021	Aug 2021	Sept 2021
Weekday	22	20	22	20	20	23	22	20	22	21	22	21
Saturday	5	4	4	5	4	4	4	5	4	5	4	4
		CLOSED Thanksgiving	CLOSED Christmas	CLOSED New Years				CLOSED Mem Day		CLOSED Indep. Day		CLOSED Labor Day

Vehicle Revenue Miles

	Oct	Nov	Dec	Jan	Feb	Mar	Apr	May	June	July	Aug	Sept	Totals
Weekday	91,707	91,707	96,074	87,340	87,340	100,441	91,707	91,707	96,074	87,340	100,441	91,707	1,113,585
Saturday	11,862	9,490	9,490	11,862	9,490	9,490	11,862	9,490	9,490	11,862	9,490	9,490	123,368
Total Rev Miles	103,569	101,197	105,564	99,202	96,830	109,931	103,569	101,197	105,564	99,202	109,931	101,197	1,236,953

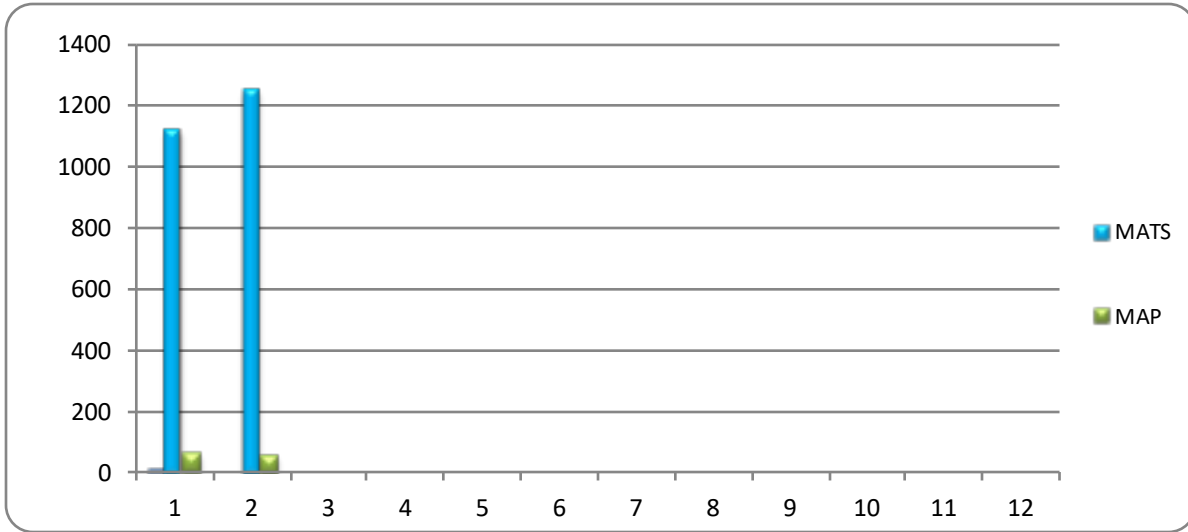
Vehicle Revenue Hours

	Oct	Nov	Dec	Jan	Feb	Mar	Apr	May	June	July	Aug	Sept	Totals
Weekday	5,665	5,665	5,935	5,395	5,395	6,204	5,665	5,665	5,935	5,395	6,204	5,665	68,786
Saturday	645	516	516	645	516	516	645	516	516	645	516	516	6,708
Total Rev Hous	6,310	6,181	6,451	6,040	5,911	6,720	6,310	6,181	6,451	6,040	6,720	6,181	75,494



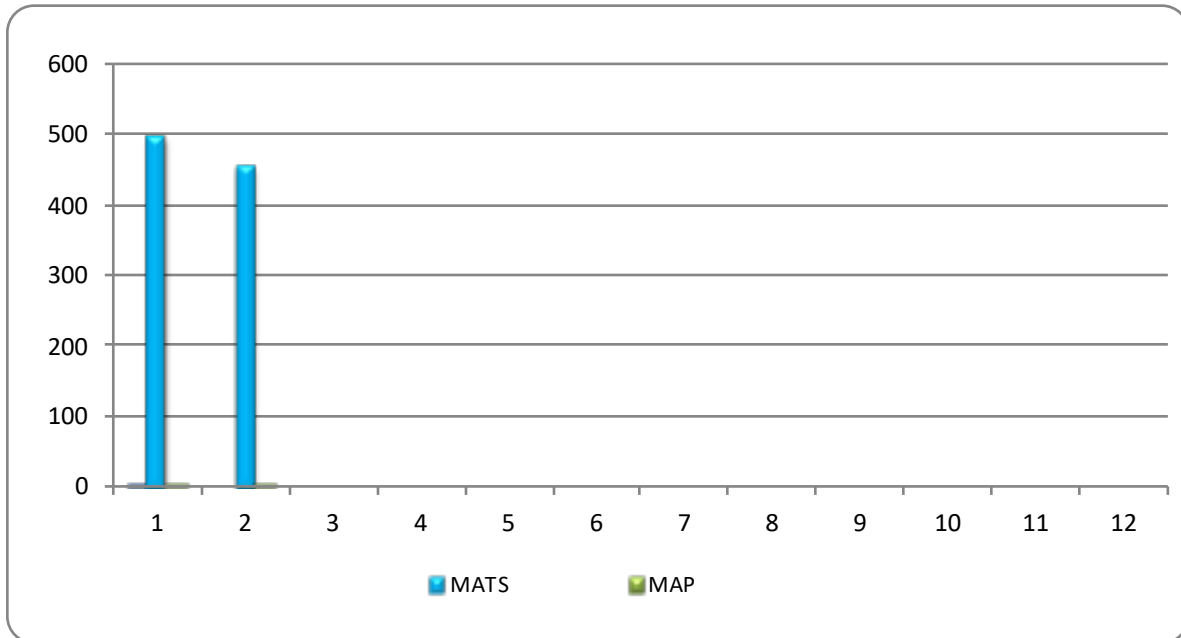
Average Weekday Passenger

	Oct	Nov	Dec	Jan	Feb	Mar	Apr	May	Jun	Jul	Aug	Sep
MATS	1,124	1,252										
MAP	59	55										



Average Saturday Passenger

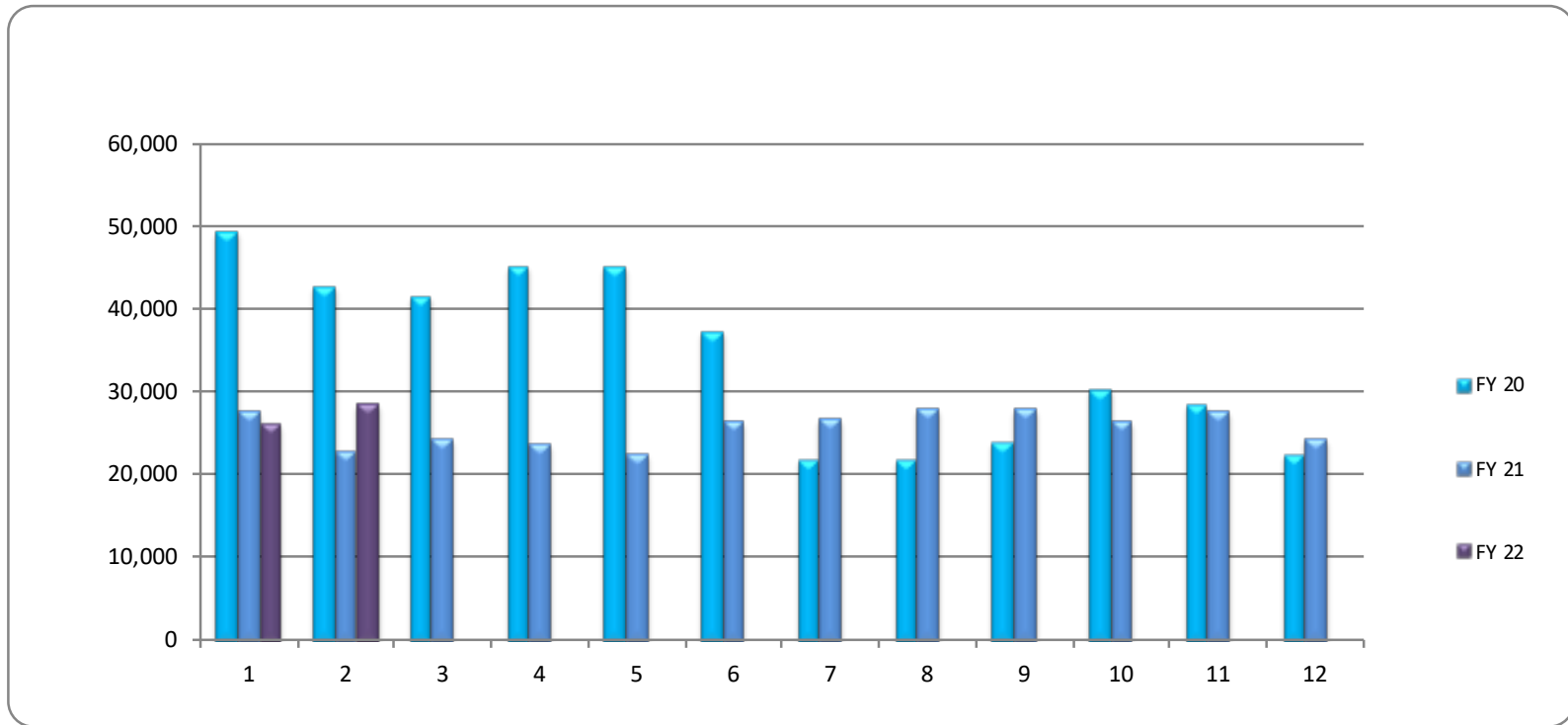
	Oct	Nov	Dec	Jan	Feb	Mar	Apr	May	Jun	Jul	Aug	Sep
MATS	497	455										
MAP	3	4										



MATS Passenger Trips



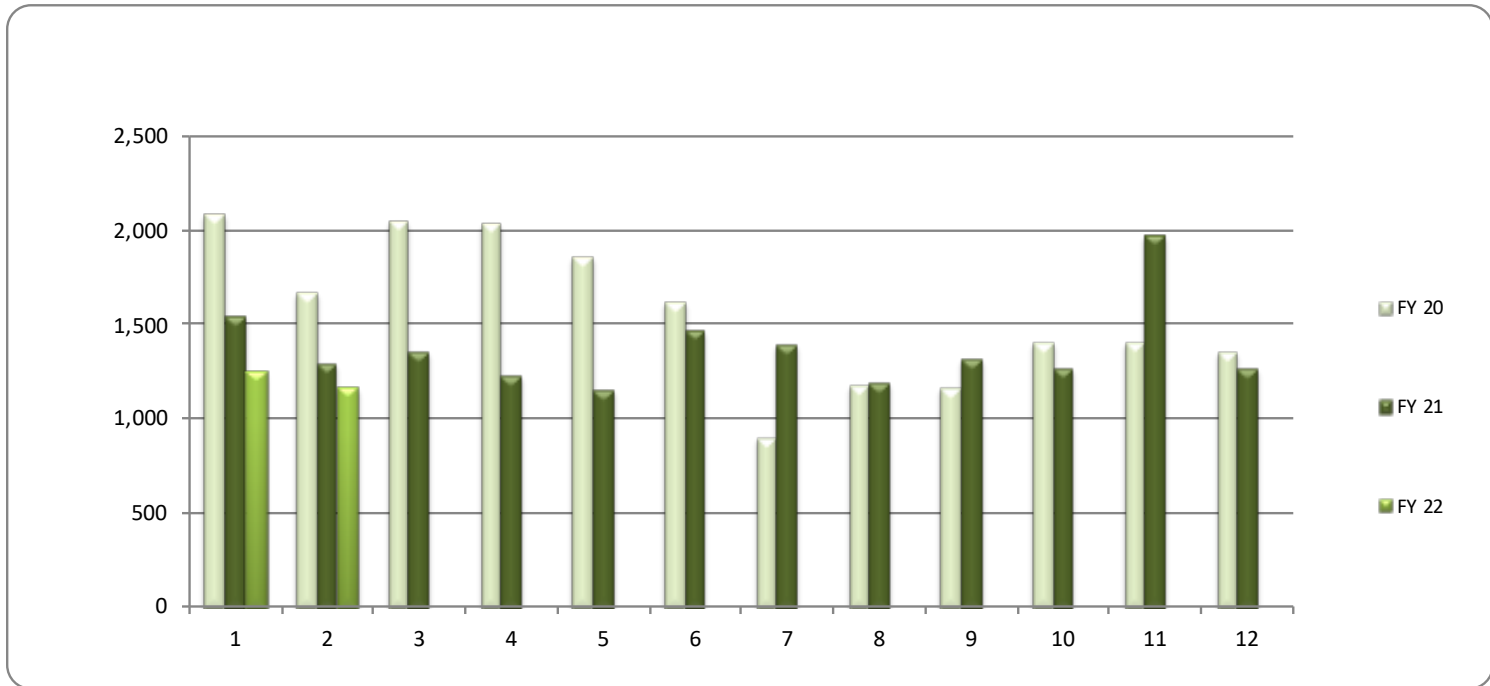
	<i>Oct</i>	<i>Nov</i>	<i>Dec</i>	<i>Jan</i>	<i>Feb</i>	<i>Mar</i>	<i>Apr</i>	<i>May</i>	<i>June</i>	<i>July</i>	<i>Aug</i>	<i>Sept</i>	Totals
FY 20	49,570	42,856	41,523	45,331	45,125	37,403	21,808	21,921	23,903	30,457	28,498	22,616	411,011
FY 21	27,662	22,908	24,225	23,609	22,502	26,465	26,773	28,010	27,905	26,591	27,616	24,334	308,600
FY 22	26,093	28,567											54,660



MAP Passenger Trips



	<i>Oct</i>	<i>Nov</i>	<i>Dec</i>	<i>Jan</i>	<i>Feb</i>	<i>Mar</i>	<i>Apr</i>	<i>May</i>	<i>June</i>	<i>July</i>	<i>Aug</i>	<i>Sept</i>	Totals
FY 20	2,089	1,674	2,046	2,042	1,859	1,616	903	1,172	1,162	1,402	1,405	1,356	18,726
FY 21	1,548	1,289	1,360	1,229	1,148	1,468	1,394	1,192	1,321	1,270	1,970	1,268	16,457
FY 22	1,246	1,161											2,407



Passenger Trips By Department FY22



	Oct	Nov	Dec	Jan	Feb	Mar	Apr	May	June	July	Aug	Sept	Totals
FIXED	26,093	28,567	0	0	0	0	0	0	0	0	0	0	54,660
MAP	1,246	1,161											2,407
TOTAL	27,339	29,728											57,067

